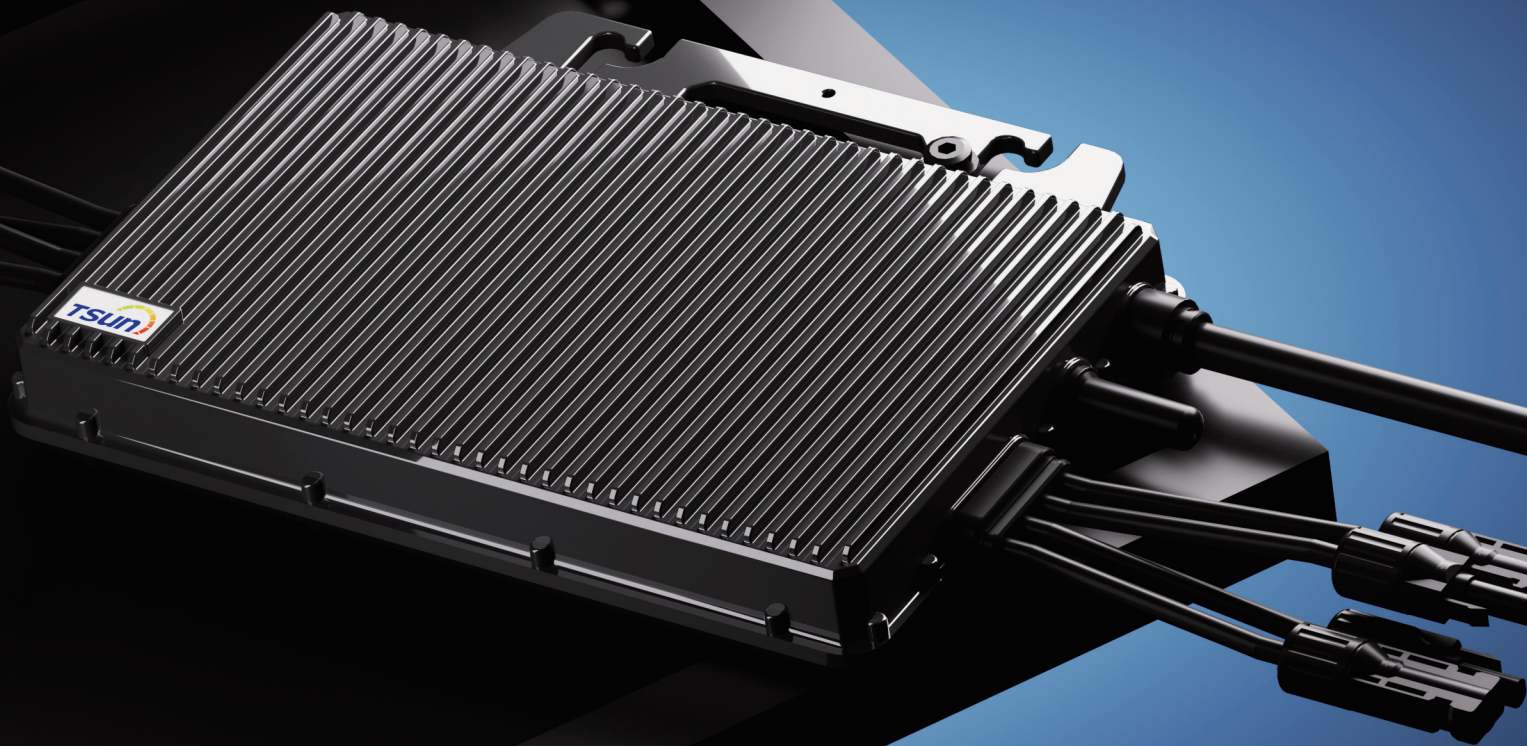


TSUN Balcony Microinverter

TSOL-MS2000(600) / TSOL-MS2000(800)



Maximized Efficiency

Individual optimization, se-parate dedicated MPPT for each panel.

New topology design, max. efficiency up to 96.7%.

Flexibility

Suitable for TSUN ESK solutions.

Plug & play installation, Easy to install.

Safety

Max. DC voltage 60V. No threat for high DC voltage.

Integrated LoM protection function. Ensure the safety of power grid.

Reliability

Die casting design and glue filling technology. Better thermal dissipation.

Standard 12 years warranty, Quality guaranteed.

CE VDE 4105 EN 50549

TSUNESS Co., Ltd

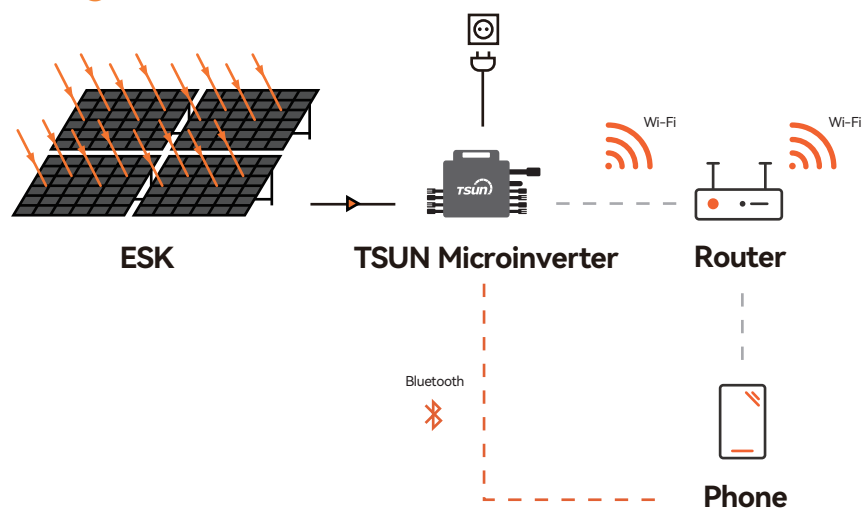
sales@tsun-ess.com www.tsun-ess.com +86-512-66186028

Technical Data

Model	TSOL-MS2000(600)	TSOL-MS2000(800)
Input [DC]		
Recommended Module Power [W]	300-700+	300-700+
Start up Voltage [V]	22	22
MPPT Voltage Range [V]	16-60	16-60
Nominal DC voltage [V]	42	42
Max. Input Voltage [V]	60	60
Max. Input Current [A]	4*16	4*16
Max. Input Short-circuit Current [A]	25	25
Quantity of MPPT	4	4
Number of Inputs per MPPT	1	1
Output [AC]		
Nominal Continous Output Power [W]	600	800
Nominal Output Current [A]	2.6	3.5
Max. Output Current [A]	3	4
Nominal Output Voltage/Range [V]	220/230/240, L/N/PE	
Nominal Frequency [Hz]	50/60	
Power Factor	>0.99 default, 0.8 leading...0.8 lagging	
MPPT efficiency	99.8%	
CEC Weighted Efficiency	96.7%	
Mechanical Data		
Dimensions [WxHxDmm]	331*261*44	
Weight [kg]	5	
Pallet	96	
General Data		
Night Time Power Consumption	<50mW	
Communication	WiFi module	
Type of Enclosure	IP67	
Cooling	Natural Convection	
Type of isolation	Galvanically Isolated HF Transformer	
Operating Ambient Temperature Range	-40℃~65℃ (derating of over 50℃ Ambient Temperature@ PV input 30V)	

※ The AC voltage and frequency range may vary depending on specific country grid.

Diagram



Monitoring Platform

TSUN Smart is an **Energy Monitoring Mobile Application Software**. Users can use Talent Home to monitor the real-time operation of the entire pv power generation system.

Monitor Generation Data of Solar Plant

One-button to Connect Network

Power Generation Statistics

Module-level Monitoring System

Fast Network Configuration

End-user Standard Accessories

Distributor and Installer Standard Accessories