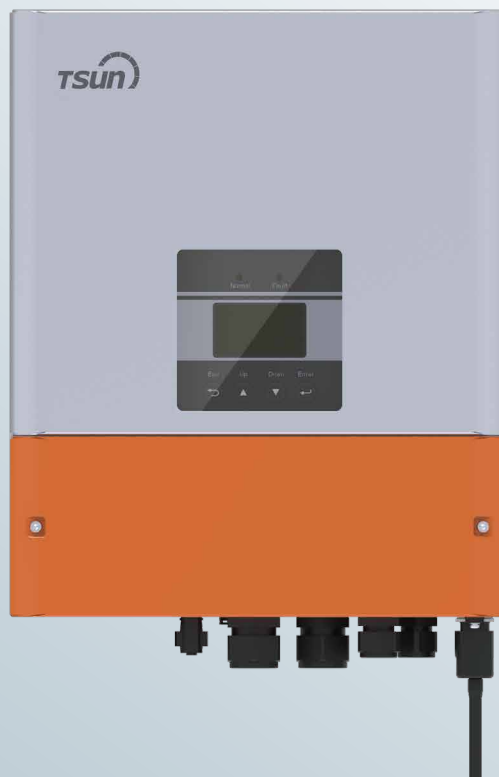


TSUN AC Coupled Inverter



TSOL-A3.0K/3.6K/4.0K/
4.6K/5.0K/6.0K-H



Flexibility

- Compatible with on-grid photovoltaic systems, easy retrofits.
- Multi operating modes optional.

Reliable and Safe

- High battery voltage, high efficiency, less maintenance.
- High frequency isolation between battery and grid.
- Advanced BMS technology for better battery performance.

Easier Operation

- Flexible installation site selection due to IP65.
- LCD Display, easy-to-read display.
- Easy monitoring by mobile phone (APP) & PC (web).

Intelligent

- Reactive power capability.
- Limits AC output when grid frequency/voltage is too high or too low.
- Built-in anti-reflex function (optional).

CE VDE 0126 VDE 4105 CEI 0-21 G98 G99 AS4777 IEC/EN 62477



TSUNESS Co., Ltd

E-mail: sales@tsun-ess.com

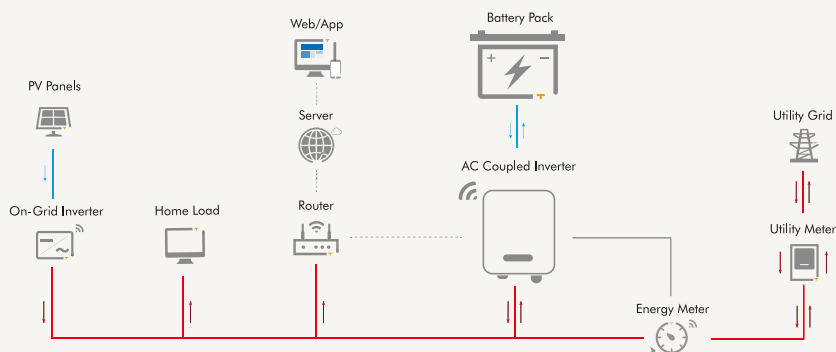
Web: www.tsun-ess.com

Tel: +86-512-6618 6028

Add: Building E1, No. 555, Chuangye Road, Dayun Town,
Jiashan County, Jiaxing City, Zhejiang Province, China

Technical Data

Model	TSOL-A3.0K-H	TSOL-A3.6K-H	TSOL-A4.0K-H	TSOL-A4.6K-H	TSOL-A5.0K-H	TSOL-A6.0K-H
AC Output Data (On-grid)						
Max. AC Apparent Power [VA]	3000	3680	4000	4600	5000	6000
Max. AC Output Current [A]	14	16	18.6	21.4	23.2	27.9
Nominal AC Voltage [V]	220/230/240,L/N/PE					
AC Voltage Range [V]	180~270					
Rated AC Grid Frequency [Hz]	50/60					
Grid Frequency Range [Hz]	45~55/55~65					
Total Harmonic Distortion (THDi) (@Nominal Power)	< 3%					
Displacement Power Factor	0.8leading - 0.8lagging					
AC Output Data(Back-up)						
Max. Output Apparent Power [VA](@Linear Load)	3000	3680	4000	4600	5000	6000
Rated AC Power(@230V/50Hz) [W]	3000	3680	4000	4600	5000	6000
Peak Output Apparent Power [VA]	5500,30sec	5500,30sec	5500,30sec	8000,30sec	8000,30sec	8000,30sec
Nominal Output Voltage [V] (@Linear Load)	230					
Nominal Output Frequency [Hz](@Linear Load)	50/60					
Max. Output Current [A](@Linear Load)	14	16	18.6	21.4	23.2	27.9
Switch Time [s]	< 1.5s					
Output THDv (@Linear Load)	< 3%					
Parallel Operation	NO					
AC Input Data						
Nominal Apparent AC Power[VA]	3000+3000(bypass)	3680+3680(bypass)	4000+4000(bypass)	4600+4600(bypass)	5000+5000(bypass)	6000+6000(bypass)
Rated Grid Voltage [V]	220/230/240,L/N/PE					
Rate frequency [Hz]	50/60					
Max. AC Current [A]	14+14(bypass)	16+16(bypass)	18.6+18.6(bypass)	21.4+21.4(bypass)	23.2+23.2(bypass)	27.9+27.9(bypass)
Battery Internal Charger						
Battery Type	Li-ion/Lead-acid					
Battery Voltage Range [V]	90-400					
Recommended Battery Voltage [V]	300					
Recommended Battery Capacity [kWh]	4.8-16.8					
Max. Charging/Discharging Current [A]	20(adjustable)					
Efficiency						
Max. Battery Charge Efficiency(PV toBAT) (@Nominal Power)	98.50%					
Max. Battery Discharge Efficiency (BAT toAC) (@Nominal Power)	97.00%					
Safety & Protection						
Protection	Residual Current Monitoring Unit (RCMU),Anti-islanding Protection,AC Short-circuit Protection, AC Surge Arrester					
DC Switch	Optional					
Grid Regulation (Additional on Request)	AS4777, G98, C10/26, RD1699, UTE C15-712-1, VDE 4105, CEI 0-21					
Safety Regulation	IEC/EN 62477					
EMC Regulation	IEC/EN 61000					
Standard Warranty [Years]	5					
Communication & Display						
Communication	BMS:CAN, Meter:RS485, Monitor:Wi-Fi					
Display	LCD					
General Data						
Dimensions (W / H / D) (Include Inverter and Packing)	400mm*460mm*170mm					
Weight (Not Include Inverter and Packing)	17 kg					
Operating Temperature Range	-20~60 C (derating at 45)					
Storage Temperature	-20~60 C					
Humidity	0~95% (non-condensing)					
Altitude	<2000m					
Noise Emission (Typical)	<30dB					
Self-consumption (Night)	<3W					
DC Connection/Battery Connection	MC4/Phoenix					
Topology	Transformerless					
Cooling Concept	Natural					
Ingress Protection	IP65					
Battery Brand	Pylontech, Alpha ESS, Energy Depot, TSUN					



For more information, visit/contact us at www.tsun-ess.com

©2019 TSUNESS. All rights reserved. All specifications are subject to change without prior notice.