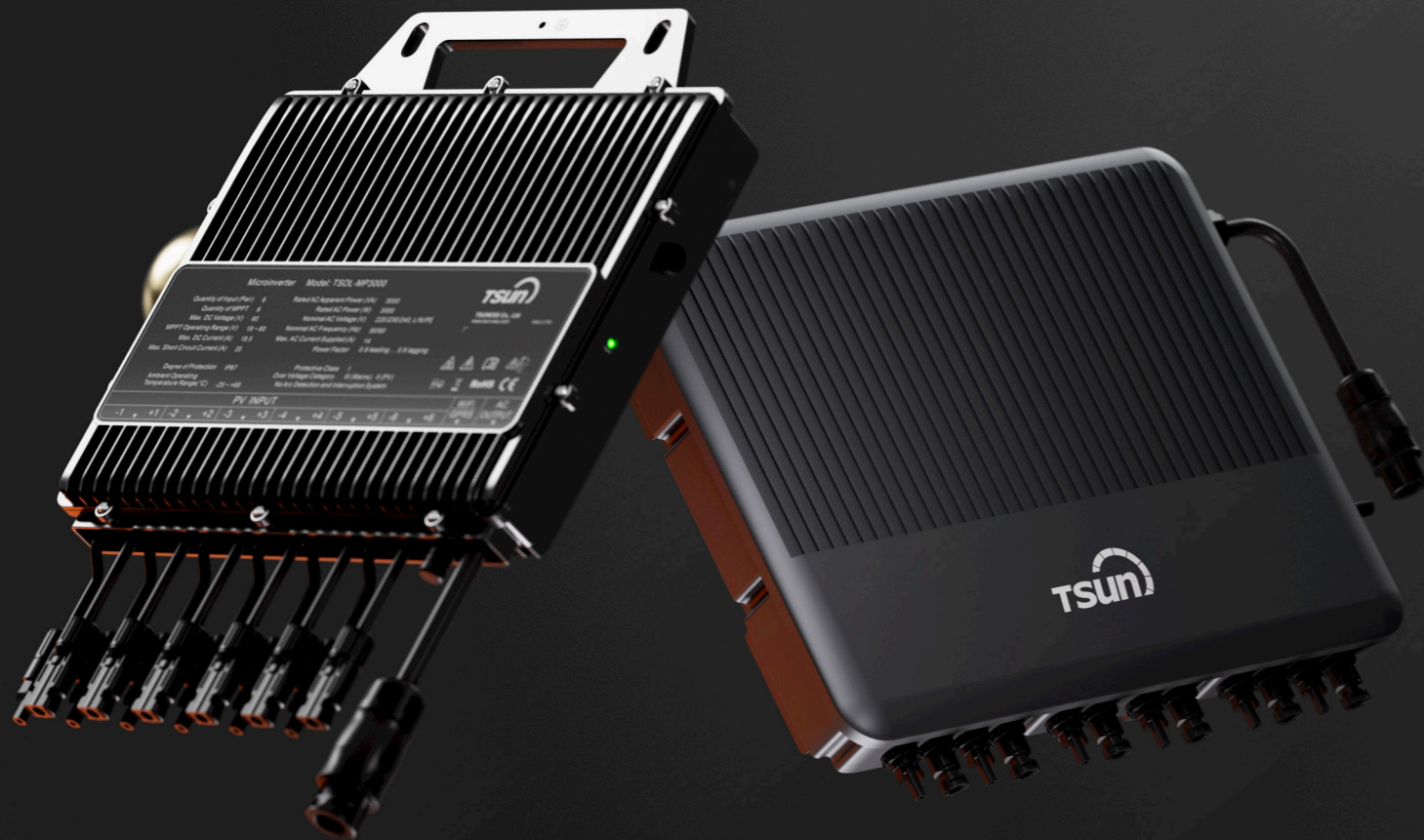


TITAN Microinverter

TSOL-MS3000/MP2250/MP3000

TSOL-MP3680/MP3750/MP4000/MP4600/MP5000/MP6000



Maximized Efficiency

- Higher output power, up to 6000W
- Higher input DC current, up to 18.5A, compatible with 182/210 solar module

Individual power conversion, up to 8 MPPTs, fit for complicated roof installation

Unique topology design, Max. efficiency up to 97.2%

Flexibility & Safety

- Plug & play installation, Easy to install.
- Max. DC voltage 60V. No threat for high DC voltage. Integrated LoM protection function. Ensure the safety of power grid.

Reliability

- Die casting design and glue filling technology. Better thermal dissipation. Standard 12 years warranty, Quality guaranteed.

CE VDE 4105 EN 50549 INMETRO

TSUNESS Co., Ltd

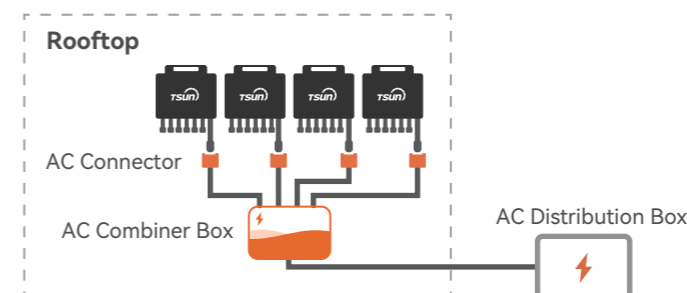
sales@tsun-ess.com www.tsun-ess.com +86-512-66186028

Technical Data 1

Model	MS3000	MP2250	MP3000
Input(DC)			
Recommended Module Power (Wp)	300 ~ 600+	400 ~ 700+	400 ~ 700+
Quantity of PV Module	7 to 8	4	4 to 6
Start up Voltage per Input@Rated condition (V)	24	22	22
MPPT Voltage Range per Input (V)	22 ~ 120	18 ~ 60	18 ~ 60
Max. Input Voltage per Input (V)	120	60	60
Short-current(A)	16	20	20
Max. Input Current per Input (A)	15	18.5	18.5
Quantity of MPPT	4	4	6
Quantity of DC Inputs	4	4	6
Output [AC]			
Nominal Continuous Output Power (W)	3000	2250	3000
Max Output Current [A]	14	11	14
Nominal Output Voltage [V]	220/230/240, L/N/PE		
Nominal Frequency [Hz]	50/60		
Power Factor	>0.99 default, 0.8 leading ... 0.8 lagging		
Output Current Harmonic Distortion	<3%		
Efficiency			
Peak Inverter Efficiency	97.2%	97.0%	97.1%
EU Efficiency	96.7%	96.5%	96.6%
Nominal MPPT Efficiency	99.9%		
Night Time Power Consumption	<1W		
Mechanical Data			
Dimensions [WxHxD mm]	354 * 294 * 60		
Weight [kg]	6.8	6.4	7.2
General Data			
Communication	WiFi (Bluetooth) or RS485 (4G Optional)		
Cable/Assembling	AC Cable up to 0.2m		
Type of Isolation	Transformerless		
Type of Enclosure	IP67		
Cooling	Natural Convection		
Operating Ambient Temperature Range	-25 ~ +65 °C (derating of over 50°C Ambient Temperature@ PV input 30V)		
Relative Humidity	100%		
Max. Operating Altitude Without Derating [m]	2000		

※The AC voltage , frequency range and plug type may vary depending on specific country grid.

Wiring Diagram 1

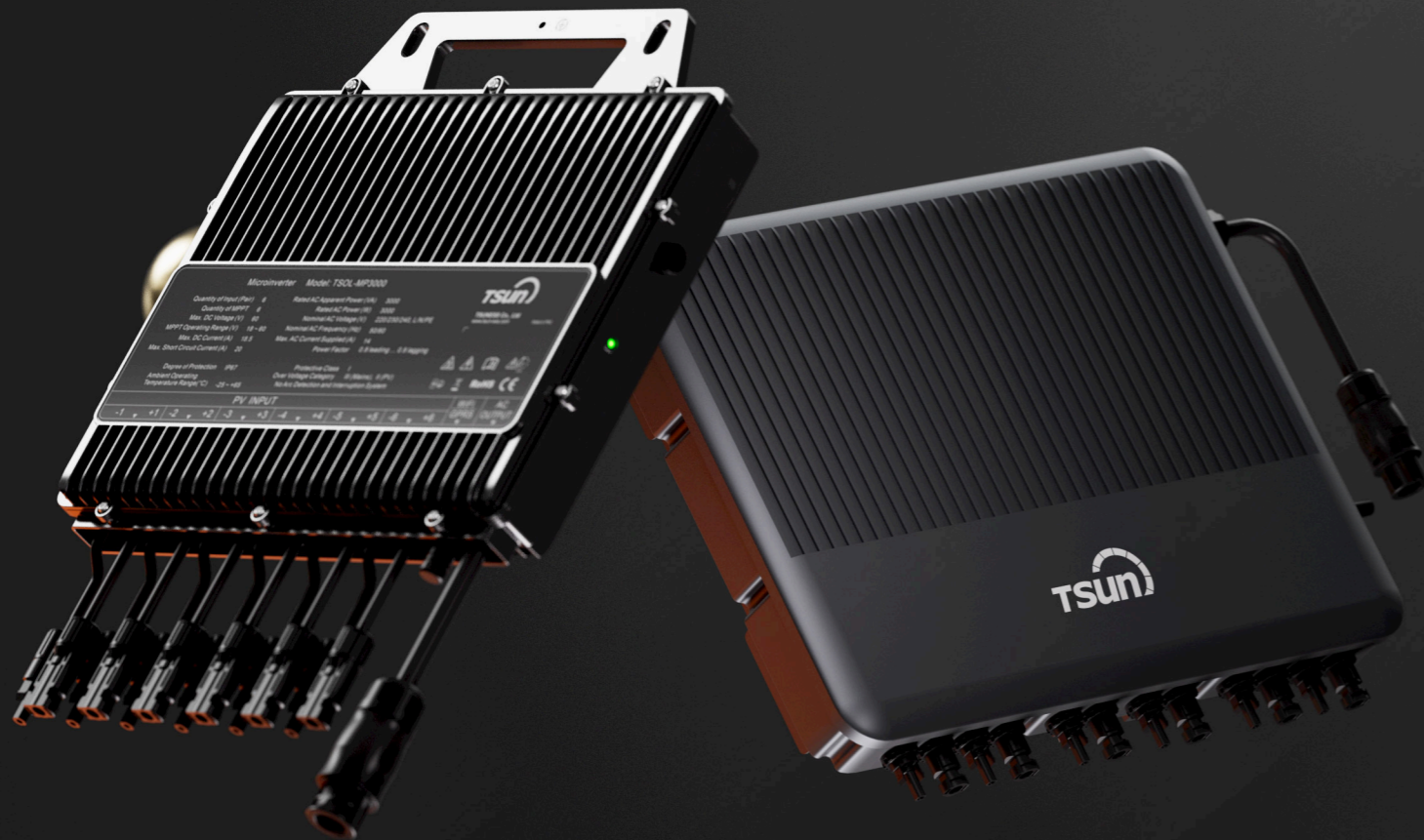


AC Combiner Box

MODEL	Input	Output
MCB-21	2	1
MCB-31	3	1
MCB-41	4	1

TITAN Microinverter

TSOL-MS3000/MP2250/MP3000
TSOL-MP3680/MP3750/MP4000/MP4600/MP5000/MP6000



Maximized Efficiency

Higher output power, up to 6000W
Higher input DC current, up to 18.5A, compatible with 182/210 solar module

Individual power conversion, up to 8 MPPTs, fit for complicated roof installation

Unique topology design, Max. efficiency up to 97.2%

Flexibility & Safety

Plug & play installation, Easy to install.
Max. DC voltage 60V. No threat for high DC voltage. Integrated LoM protection function. Ensure the safety of power grid.

Reliability

Die casting design and glue filling technology. Better thermal dissipation. Standard 12 years warranty, Quality guaranteed.

CE VDE 4105 EN 50549 INMETRO

TSUNESS Co., Ltd

sales@tsun-ess.com www.tsun-ess.com +86-512-66186028

Technical Data 2

Model	MP3680	MP3750	MP4000	MP4600	MP5000	MP6000
Input(DC)						
Recommended Module Power (Wp)	400 ~ 700+	400 ~ 700+	400 ~ 700+	400 ~ 700+	400 ~ 700+	400 ~ 700+
Quantity of PV Module	1 to 8	1 to 8	1 to 8	1 to 10	1 to 10	1 to 12
Start up Voltage per Input@Rated condition (V)	24	24	24	24	24	24
MPPT Voltage Range per Input (V)	22~120	22~120	22~120	22~120	22~120	22~120
Max. Input Voltage per Input (V)	120	120	120	120	120	120
Short-current(A)	25	25	25	25	25	25
Max. Input Current per Input (A)	20	20	20	20	20	20
Quantity of MPPT	3	3	3	3	3	3
Quantity of DC Inputs	6	6	6	6	6	6
Output [AC]						
Nominal Continuous Output Power (W)	3680	3750	4000	4600	5000	6000
Max Output Current [A]	16	18.75	20	23	25	30
Nominal Output Voltage [V]	220/230/240, L/N/PE					
Nominal Frequency [Hz]	50/60					
Power Factor	>0.99 default, 0.8 leading ... 0.8 lagging					
Output Current Harmonic Distortion	<3%					
Efficiency						
Peak Inverter Efficiency	97.0%					
EU Efficiency	96.7%					
Nominal MPPT Efficiency	99.9%					
Night Time Power Consumption	<1W					
Mechanical Data						
Dimensions [WxHxD mm]	471 * 371 * 70					
Weight [kg]	11					
General Data						
Communication	WiFi (Bluetooth) or RS485 (4G Optional)					
Cable/Assembling	AC Cable up to 0.2m					
Type of Isolation	Transformerless					
Type of Enclosure	IP67					
Cooling	Natural convection					
Operating Ambient Temperature Range	-25 ~ +65 °C (derating of over 50°C Ambient Temperature@ PV input 30V)					
Relative Humidity	100%					
Max. Operating Altitude Without Derating [m]	2000					

※The AC voltage , frequency range and plug type may vary depending on specific country grid.

Wiring Diagram 2

